



***Greenpower***  
***Education Trust***  
**PORTFOLIO GUIDE**  
**F24**



**SIEMENS**



**SOLID EDGE**

**Hogan  
Lovells**

# Your Greenpower Portfolio Guide

## Guide for Formula 24

This is a guide which explains how to structure your portfolio so that you can make the most of recording your Greenpower experiences. Your portfolio will be a record of your journey throughout the project, from the early stages of fundraising, to designing, building, testing, fine-tuning and finally racing your car.



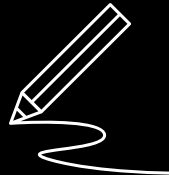
### Why make a portfolio?

- It will highlight the skills that you have learnt throughout the Greenpower project
- It acts as a record of your engineering experience and can be used when applying for apprenticeships, part time jobs, college or even University
- The best portfolio at each event receives an award from Greenpower



### What should my portfolio look like?

Your portfolio is unique to you, showcasing your skills and talents. Everybody's should look different!



Show off annotated sketches of your car designs



Add QR codes to share your videos and photos



Include a piece of written work which documents an important part of your Greenpower project – a newspaper article, a diary entry or a narrative



Win any awards on a previous race day? Make sure you include these



Take screenshots of the design ideas you created using Solid Edge CAD software



Share testimonials written by your teachers or mentor

# Struggling to start your Portfolio?

We recommend structuring it chronologically, after all the portfolio is meant to show your team's journey from the start line all the way to the chequered flag!

## 1. Project beginnings

Why did you get involved?  
What were you hoping to learn?  
Did you have to fundraise?  
Who was in your team?  
What roles did each member have?

## 2. Industry research & mentoring

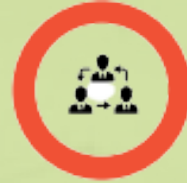
How was your company visit?  
Who was your mentor?  
What was their career history?  
How did they help overcome obstacles?  
What did you learn from them?

## 3. Designing the car

What are the most important design features of your car?  
Why did you choose your final design?  
Include screenshots of your 3D Solid Edge prototype designs.

## 4. If you've raced previously

Why was your car successful in the race?  
Why was your car unsuccessful in the race?  
What was your fastest lap time?  
Did you have to overcome any problems?  
What design improvements could you make?



## 5. Closing reflections

What were your team's biggest strengths?  
What were your team's biggest weaknesses?  
What skills have you developed?  
Has this project changed your career aspirations?  
Which was your favourite part of the project?



**Off you go!**

## Submitting your Portfolio

To enter your portfolio for the portfolio award at an event, simply bring it with you on race day and take it to Race Administration when you sign in. It will then be judged during the day by our independent judging team. They'll ask you if they have any questions or want to find out more.

To download the Solid Edge for FREE and CAD models of the F24 kit car visit [https://www.plm.automation.siemens.com/en\\_gb/academic/projects-competitions/greenpower.shtml](https://www.plm.automation.siemens.com/en_gb/academic/projects-competitions/greenpower.shtml)

Call Us

Follow Us

Email Us

Greenpower Education Trust

The Greenpower Centre  
Arundel Road, Fontwell,  
West Sussex BN18 0SD

T: 01243 552 305

E: [info@greenpower.co.uk](mailto:info@greenpower.co.uk)

Greenpower Education Trust is a charity registered in England and Wales no. 1133536 and in Scotland no. SC046969

[www.greenpower.co.uk](http://www.greenpower.co.uk)



/GreenpowerTrust



/greenpowerteam



/GreenpowerTrust



/company/greenpower-education-trust